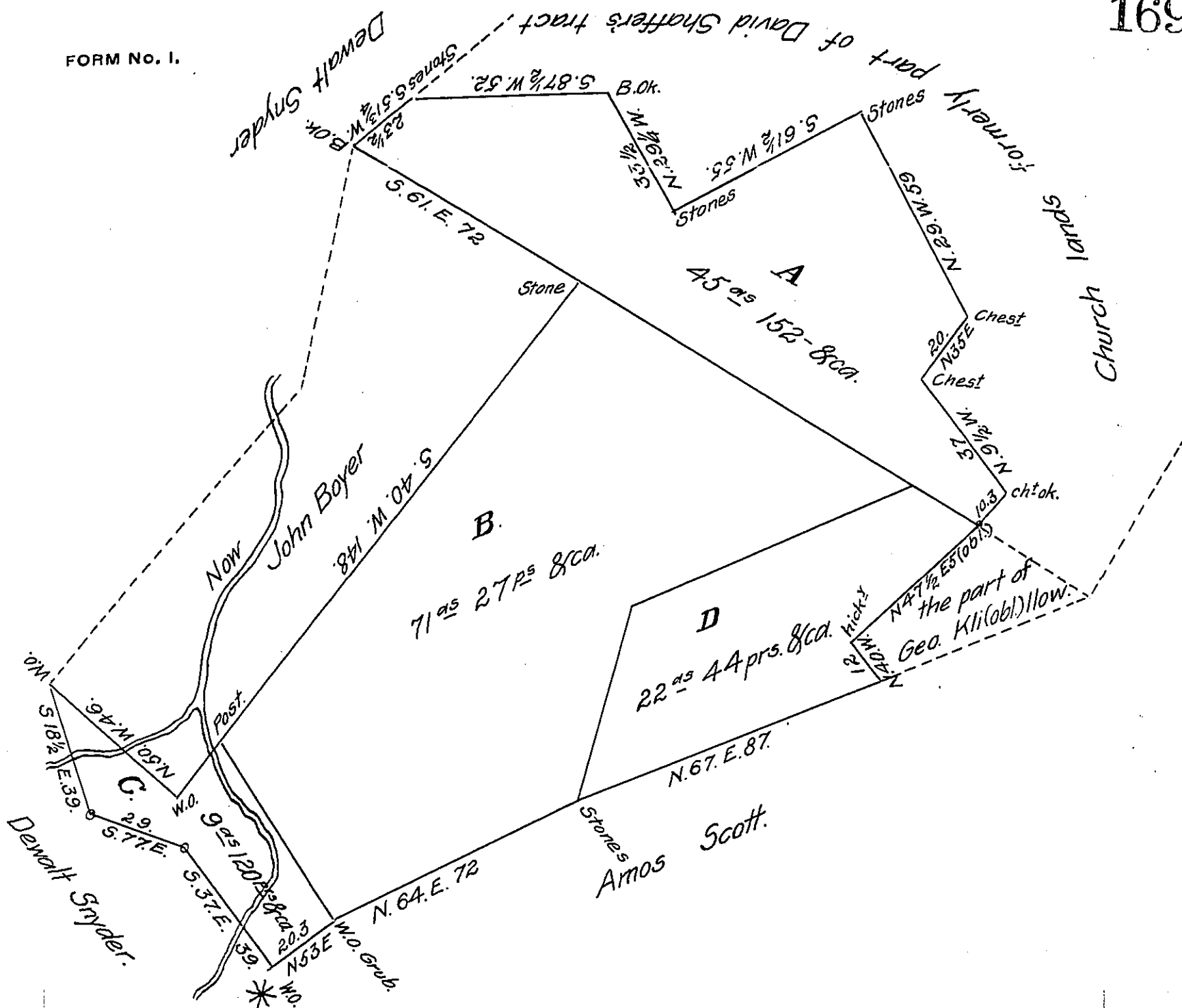


FORM No. 1.



A Draught of a tract of land situate in Shrewsbury T(obl.)nship York County Surveyed as follows viz:

45^{acs} 152^{prs} (pt. of 95^{acs} 80^{prs}) the part represented by the lines including the letter *A* to David Shaffer on W^t dated 10th September (obl.) 50

22^{acs} 44^{prs} (pt. of 29^{acs} 19^{prs}) the part represented by the lines including the letter *D* to to George Kli(obl)efellow on W^t 1st June 1762.

9^{acs} 120^{prs} the part represented by the lines including the letter *C* to Jacob Kaufelt on W^t dated 22nd January 1773.

71^{acs} 27^{prs} the part represented by the lines including the letter *B* to John Bailey on Warrant dated 10th May 1803.

149^{acs} 23^{prs} and allowance of Six p^t Cent.

Connected November 29th 1809.

p^t J. M. Porter —

IN TESTIMONY that the above is a copy of the original remaining on file in the Department of Internal Affairs of Pennsylvania, made conformably to an Act of Assembly approved the 16th day of February, 1833, I have hereunto set my Hand and caused the Seal of said Department to be affixed at Harrisburg, this fourth day of December 1906.

Loaco Brown
Secretary of Internal Affairs.